



## FEES & CHARGES 2024



Aéroport de La Rochelle-Ile de Ré  
Rue du Jura  
17000 LA ROCHELLE  
05.46.42.86.71  
[www.larochelle.aeroport.fr](http://www.larochelle.aeroport.fr)

# CONTENTS

<b>PART 1 : GENERAL INFORMATION</b>	<b>3</b>
I - Who to contact	3
II - Terms of payment	3
<b>PART 2 : AERONAUTICAL FEES</b>	<b>6</b>
I - Landing fees	7
II - Ground lighting fees	9
III - Aircraft parking fees	11
IV - Passenger fees	12
<b>PART 3 : FEES FOR THE USE OF FACILITIES</b>	<b>14</b>
I - Fees for use of aviation fuelling facilities	15
II - Hangar fees for aircraft under 6 tons	16
III - Staff	16
IV - Airport out-of-hours opening charges	17
V - Estate fees	17
VI - Referencing of transport companies on the website of La Rochelle - Ile de Ré airport	18
VII - Access to the Taxi zone	18
<b>PART 4 : VEHICLE PARKING CHARGES</b>	<b>19</b>
<b>PART 5 : INCENTIVES</b>	<b>21</b>

## PART 1 : GENERAL INFORMATION

### I – Who to contact

#### CUSTOMER INVOICING DEPARTMENT

**Béatrice COCHIN**

☎ +33 (0)5 46 42 86 71

✉ [b.cochin@larochelle.aeroport.fr](mailto:b.cochin@larochelle.aeroport.fr)

### II – Terms of payment

#### **METHOD OF PAYMENT**

##### **A/ General provisions**

On any airfield open to public air traffic, the services provided to users and the public give rise to remuneration in the form of fees paid to the person providing the service.

Aeronautical fees are to be paid in full to the airport services before any take-off.

In case of non-payment, if the owner of the aircraft does not leave their contact information, a search is carried out using the aircraft registration number. In this case, a surcharge of **€7 excl. VAT** is applied.

However, some users may not be subject to this obligation and the costs are then invoiced periodically:

- based customers or customers with premises on the airport site,
- regular customers who have expressly requested it.

## **B/ Methods of payment**

- Fees are to be paid in full, either by bank cheque or postal order made out to TRESOR PUBLIC, or by credit card.
- Invoices (« titre exécutoire ») issued by Paierie Departementale de la Charente Maritime.

### **PAYMENT OF INVOICES**

- By bank transfer made payable to:

Banque de France  
1, Rue la Vrillière  
75001 PARIS

PAIERIE DEPARTEMENTALE  
DE LA CHARENTE-MARITIME  
85 BD DE LA REPUBLIQUE  
17001 LA ROCHELLE CEDEX 1

Relevé d'Identité Bancaire (RIB) 053

RIB : 30001 00695 C1710000000 34  
IBAN : FR43 3000 1006 95C1 7100 0000 034  
BIC : BDFEFRPPCCT

- By bank cheque or postal order :

Made payable to: TRESOR PUBLIC

And addressed to:

**PAYEUR DEPARTEMENTAL DE CHARENTE-MARITIME**

**85 boulevard de la République**

**BP 70376**

**17001 LA ROCHELLE CEDEX 1**

## **IMPORTANT**

Attach the invoice payment return slip or quote the invoice references appearing on this slip.

## **LATE PAYMENT**

Invoices are payable on the due date shown on the invoice.

## **APPLICATION**

These fees are effective **from 1<sup>st</sup> JULY 2024.**

## PART 2 : AERONAUTICAL FEES



Charges are shown in euros excluding VAT  
The weights are shown in tons.

### **PREAMBLE**

It is the customers' responsibility to inform the billing department of any amendment made to their fleet: purchases, sales, rentals, leasings, changes in aircraft characteristics, etc., under penalty of being charged according to the known characteristics of La Rochelle-Ile de Ré Airport.

### **REDUCTIONS – EXEMPTIONS**

The general or specific provisions concerning reductions or exemptions from charges set or approved by the French Minister for Civil Aviation before the introduction of this rates guide remain applicable.

## I – Applicable landing fees

- Commercial aircraft
- Non-commercial aircraft over 6 tons
- Aircraft weighing under 6 tons

Landing fees are charged to any aircraft landing at the airport. Fees are calculated based on the maximum take-off weight shown on the Airworthiness Certificate of the aircraft, rounded up to the nearest tonne.

The weight W (Maximum Take-Off Weight) of the aircraft is expressed in tons; it is rounded up to the nearest tonne.

The rates are:

### 1) Commercial and non-commercial aircraft weighing 6 tons and above

AIRCRAFT WEIGHT	2024 RATE
$W < 6 \text{ T}$	€11,35
$6 \text{ T} \leq W < 25 \text{ T}$	€11,62 + €1,76 (W-6)
$25 \text{ T} \leq W < 75 \text{ T}$	€45,18 + €4,75 (W-25)
$W \geq 75 \text{ T}$	€282,07 + €5,65 (W-75)

### 2) Non-commercial aircraft weighing under 6 tons

	2024 RATE
Non-commercial aircraft under 6 tons *	€12,68
Professional aircraft based at La Rochelle - Ile de Ré Airport	
$W < 1,5 \text{ T}$	€8.16
$1,5 \text{ T} \leq W < 2,5 \text{ T}$	€9,61
$2,5 \text{ T} \leq W < 6 \text{ T}$	€12,68



Flying club aircraft based at La Rochelle- Ile de Ré Airport	
Charge per month and per aircraft	<b>€79,83</b>

\* Reduction of 30% for private aircraft based on the platform (excluding companies engaged in commercial activity).

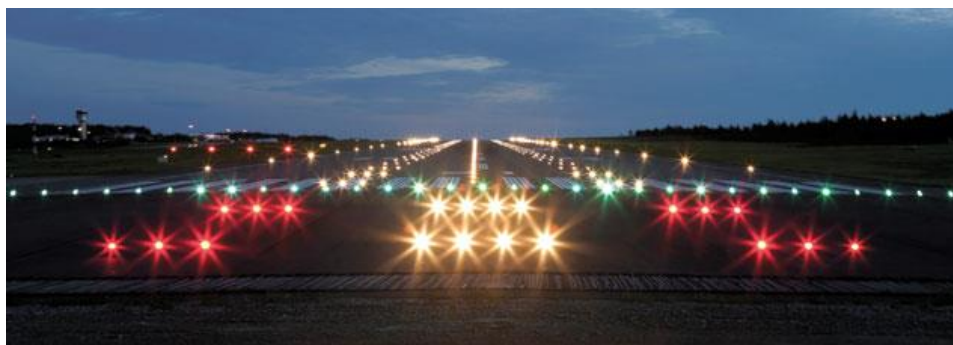
### **SPECIAL CONDITIONS**

	<b>REDUCTION</b>
National Marine Secondment aircraft based at La Rochelle	20 %
Aircraft based on the platform	30 %
Helicopters	50 %
Touch and go	75 %
Civil Security aircraft	75 %
Aircraft specifically used to transport public figures performing responsibilities featured on a list drawn up by order of the French Minister responsible for Civil Aviation or Government aircraft	100 %
Aircraft forced to return to the airport due to technical incidents or poor weather conditions (Article 9 – Decree of 24/01/1956)	100 %
Aircraft received to provide technical assistance to a plane immobilised on the parking area of an airline company providing public transport	100 %
Aircraft performing test flights *	100 %

\* Companies based at La Rochelle – Ile de Ré airport performing local test flights (manufacturers, maintenance...) benefit a reduction of 50% on these landing fees.



## II – Ground lighting fees



The following fee will be levied for each flight (landing and take-off):

Commercial and non-commercial aircraft weighing 6 tons and above	Non-commercial aircraft weighing under 6 tons
€29,78	€31,73

In accordance with the provisions of the ministerial decision classifying the Airfield of La Rochelle–Ile de Ré in the 2nd category as an airfield with high intensity ground lighting.

### **SPECIAL CASES**

→ **Training flights:** the set fee for one hour of lighting is equal to four times the nominal use fee. Every training session gives rise to the collection of a fee corresponding to 30 minutes of lighting. After 30 minutes, the amount due is established on the basis of 15 minutes and each 15 minute period started is due in full.

→ **Based flying clubs:** €9,06 excl. VAT per ground lighting.

## **SPECIAL CONDITIONS**

	REDUCTION
National Marine Secondment aircraft based at La Rochelle	20 %
Civil Security aircraft	75 %
Aircraft specifically used to transport public figures performing responsibilities featured on a list drawn up by order of the French Minister responsible for Civil Aviation or Government aircraft	100 %
Aircraft forced to return to the airport due to technical incidents or poor weather conditions (Article 9 – Decree of 24/01/1956)	100 %
Aircraft received to provide technical assistance to a plane immobilised on the parking area of an airline company providing public transport	100 %
Aircraft performing test flights	100 %

### **III – Aircraft parking fees**



Irrespective of the nature of the traffic carried out by the aircraft, the following fees shall be levied after the first two hours which are free of charge, per tonne and per hour of parking:

	From 01/05/2024 to 31/10/2024*	From 01/11/2024 to 31/03/2025
<u>2 hour allowance</u>		
Thereafter, per tonne and per hour :		
→ On paved apron F		
- commercial* and non-commercial aircrafts weighing 6 tons and above	€1,10	€0,37
- non-commercial aircrafts weighing under 6 tons	€1,17	€0,42
→ On the grass apron GOLF	€0,29	€0,22

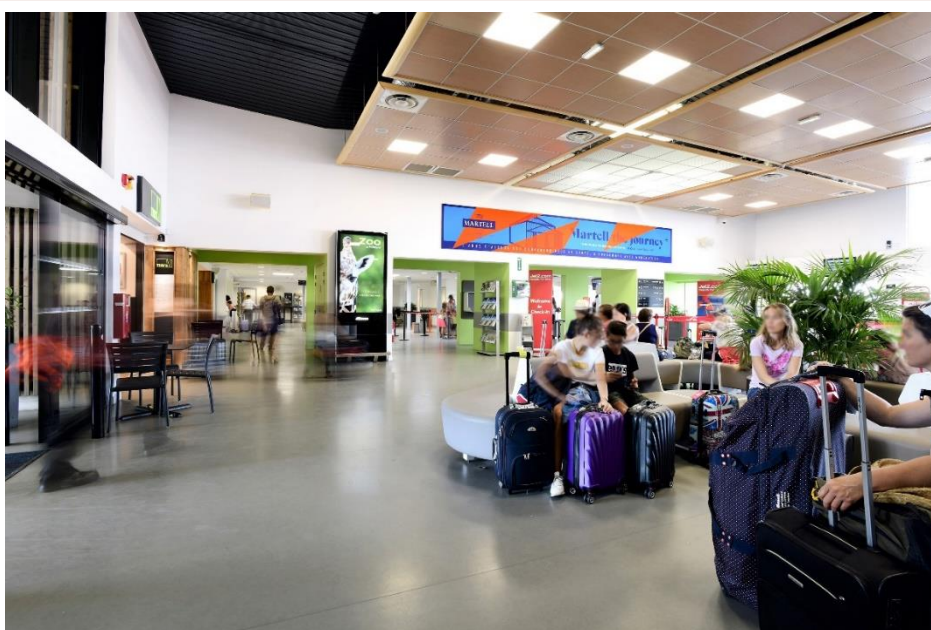
\* Excluding commercial aircraft based at the airport.

Any hour started is due in full.

**Paved apron F**: For scheduled commercial flights only. Can be used after permission from handling service AVIAPARTNER EXECUTIVE, the PPR must be submitted 48 HR in advance. Parking without prior permission can be refused.

**Grass apron G**: compulsory for general aviation.

## IV – Passenger fees



## FEES FOR THE USE OF AIRPORT FACILITIES DESIGNED FOR PASSENGER RECEPTION

This fee is payable for the use of structures and general facilities for the boarding, disembarking and handling of passengers and by any carrier operating an aircraft for commercial purposes or any aircraft with a maximum take-off weight exceeding 6 tons that is not used for commercial purposes. The fee is calculated based on the number of passengers declared on the departure traffic sheet submitted to the airport for the following carrier categories:

- Scheduled airline companies
- Companies operating chartered flights
- Air taxis...

The fee is paid for every departing passenger aboard the aircraft:

	2024 RATE
Passenger	6,20 €

## SPECIAL CONDITIONS

PASSENGER TYPE	REDUCTION
Crew members (Article 6 - Decree of 28/02/1981)	100 %
Passengers making a temporary stop-over at the airport and departing with the same aircraft and flight number (Article 1 - Decree of 19/12/1994)	100 %
Passengers on aircraft forced to return to the airport due to technical incidents or poor weather conditions (Article 6 - Decree of 28/02/1981)	100 %
Passengers in aircraft performing technical stop-overs (Article 6 - Decree of 28/02/1981)	100 %
Children under the age of 2 (Article 6 - Decree of 28/02/1981)	100 %

### **Passenger with reduced mobility fees (PMR)**

Pursuant to the provisions of Regulation (EC) no. 1107/2006 of the European Parliament and of the Council of 5 July 2006, airports must provide assistance to persons with reduced mobility (PRM) under the conditions set out in the text.

The fee is paid for every departing passenger aboard the aircraft: **€0,57**

## PART 3 : FEES FOR USE OF FACILITIES



Les Rates are shown in euros excluding VAT.

The weights are shown in tons.



## I – Fees for use of aviation fuelling facilities



### ☛ Who to contact?

Fuelling Service : ☎ +33 (0)5.46.42.86.69 – E-mail : [avitailleur@larochelle.aeroport.fr](mailto:avitailleur@larochelle.aeroport.fr)

A fee is payable to the airport for the supply of fuel.

The rates are :

	2024 RATE
AVGAS 100LL	€0,80 per hectolitre
Jet A1	€0,62 per hectolitre



## II – Hangar fees for aircraft under 6 tons

A single charge is proposed irrespective of weight of the aircraft.

	2024 RATE
PAR DAY	€27,40
PAR MONTH	€205,68
PAR YEAR	€1 645,44

- **Per day**, a 24-hour period runs between midday and midday.
- **Per month** : a month is defined as a calendar month. Any month booked is due in full. Any month started is due in full.
- **Par an** : a year is defined as a calendar year.

## III – Staff (refuelling)

For any refuelling request outside of the airport's opening hours, a fee is payable for the provision of a refueller:

	2024 RATE
Flat rate :	
From Monday to Saturday	€369,70
Sunday and public holidays	€534,30

## IV – Airport out-of-hour opening charges\* (outside the published opening hours)

FLAT RATE**	2024 RATE
Extension of up to 2.5 hours	€240,85
Extension of between 2.5 and 4 hours	€602,12
Extension of over 4 hours	€963,42

\* Subject to prior agreement of the timetable extension by the airport authority

These provisions are not applicable for scheduled flights which would incur delays

\*\* 20% surcharge on Sundays and public holidays

## V – Estate fees

ESTATE FEE	2024 RATE
Vacant land (per m <sup>2</sup> & year)	€2,19
Vacant land (Temporary Occupation Authorisation) in force from 01/01/2024 (per m <sup>2</sup> )	€3,00
Minimum amount collected	€64,49

Land with services	To be determined according to the location and surface area.
Building rental	
Temporary buildings (workshops, offices, stores)	
Permanent buildings	
Terminal premises per year	

## VI – Referencing of transport companies on the website of La Rochelle - Ile de Ré Airport



	2024 RATE
Taxis & Transport Car with Driver	€67,27 € HT / year

## VII - Access to the taxi zone

La Rochelle - Ile de Ré airport has a taxi zone. Only taxis from La Rochelle can park freely while waiting for customers. Taxis from outside the municipality must be reserved in advance to park in the restricted area.

	2024 RATE
Taxis Rochelais	€44,84 € / year
Other taxis, Transport Car with Driver, transport companies...	€22,43 / year

## PART 4 : VEHICLE PARKING CHARGES



Vehicles parking in the car park are not supervised.

PARKING DURATION	2024 RATE, including VAT
First 15 minutes	Free
15 to 30 minutes	€2,00
1 hour	€2,90
2 hours	€4,50
3 hour	€5,70
4 hours	€6,10
12 heures	€9,30
12 to 24 hours	€12,50
2 day fixed rate	€22,00
3 day fixed rate	€30,00
3-5 day fixed rate	€40,00
5-7 day fixed rate	€50,00

7-10 day fixed rate	€65,00
10-14 day fixed rate	€85,00
14-21 day fixed rate	€115,00
21 day to 1 month fixed rate	€140,00
Every extra week after one month	€25,00
<b>Subscription rate - Magnetic card on request</b>	
3 months	€320,00
6 months	€560,00
1 year	€840,00

\* Rates which may be modified over the season

For any subscription enquiries, please contact the airport: [c.dousset@larochelle.aeroport.fr](mailto:c.dousset@larochelle.aeroport.fr)

## **PART 5 : INCENTIVE**

### **PREAMBLE**

La Rochelle - Ile de Ré Airport proposes to put in place measures aimed at encouraging the creation of new routes, stimulating recovery and traffic development with the aim of improving its profitability, meeting the growing needs for mobility air and improve the accessibility of La Rochelle and its region.

These measures are transparent, non-discriminatory, time-limited, and applicable to all companies. Consequently, they do not constitute State aid within the meaning of European law. However, these cannot apply to routes operated within the framework of subsidized Public Service Obligations (PSO).

### **I – Incentives for the creation of new routes**

#### **A. Eligibility criteria**

- Is considered eligible any new regular route connecting an airport not served at the departure of La Rochelle – Ile de Ré airport
- The new route must serve an airport at least 50 km away from an airport already connected to La Rochelle – Ile de Ré airport
- The service must be operated during at least 2 months without interruption
- Minimum schedule: one weekly frequency
- Prior period without service: no requirement. However, the same company, or a company belonging to the same group, may not benefit from the incentive if the said route was previously operated by a company of the same group and was suspended less than 12 months beforehand.

In the case of a seasonal interruption, the sliding-scale incentive process will continue from the moment when operation of the route resumes, as if it had never been suspended. The period of interruption is included in the period to which the reduction applies.

#### **B. Definition of incentives**



### **Discount on aeronautical fees**

Any airline setting up a regular scheduled route meeting the criteria as defined above, may benefit from a discount on landing and passenger fees.

Reduction rates are calculated according to the number of years this service has been operating :

<b>Year 1</b>	-75% on landing and passenger fees
<b>Year 2</b>	-50% on landing and passenger fees
<b>Year 3</b>	-25% on landing and passenger fees

### **Marketing support**

The airport may participate in the financing of marketing actions.

The company will have to present the costed communication plan detailing the actions taken for the purpose of promoting the new route. It shall present evidence of the costs incurred up to the amount of marketing support allocated. The practicalities shall be determined in an agreement with La Rochelle - Ile de Ré airport.

Contact airport services for more information.

### **Terms and conditions**

If the airline fails to comply with the minimum flight schedule required in the eligibility criteria, it will lose the benefit of the incentives, specifically discounts on aeronautical fees and marketing support (except in the case of force majeure) for the year concerned.



## **II – « Private Operator » Agreements**

"Private operator" contracts may be concluded with companies on the basis of a flights program to be produced by the company and a preliminary business plan realized by the airport demonstrating the profitability of the contract in accordance with the market economy operator principle.

Contact the airport services to present the flights program proposed by the company.